

Disponibilizamos uma linha completa de equipamentos e máquinas que são tendências no mercado mundial em aspectos como:

***Design** buscamos na fonte o que chegará no Brasil posteriormente, deixando nossos clientes sempre a frente.*

***Bio-mecânica** desenvolvidos com tecnologia de ponta e materiais sustentáveis.*

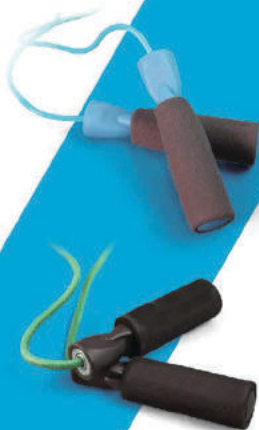
***Qualidade** a mesma encontrada nas marcas líder de mercado e a garantia de um equipamento com longevidade oferecendo um ótimo custo-benefício e segurança para o usuário.*



01 AGILITY & SPEED

敏捷&速度

SKIP ROPE / PEACTRY BALL /
AGILITY LADDER /
TRAINING CONE / PUMP BONES
跳绳/反应球/
敏捷梯/敏捷锥/
锥式跳箱



SPEED JUMP ROPE/速度跳绳

ASW7429GT Speed Jump Rope-Green

SPECIFICATION.

2700 (L) * 5.5 (d) mm.
PVC rope and PP handle.

- 优质高强度PVC绳
- 韧性好，不缠绕、不打结
- 长度可调
- 品牌精钢轴承，高密度海绵把手
- 增强人体心血管、呼吸和神经系
统功能，培养灵活性和协调性

Color
Options: ■

LEATHER JUMP ROPE/牛皮跳绳

ASW7886GT Leather Jump Rope-Black

SPECIFICATION.

2750 (L) * 5.5 (d) mm.
Leather rope and PP handle.
Packing-color box.

- 精造头层牛皮制成
- 韧性好，不缠绕、不打结
- 长度可调
- 品牌精钢轴承，高密度海绵把手
- 增强人体心血管、呼吸和神经系
统功能，培养灵活性和协调性

Color
Options: ■

01 | AGILITY & SPEED 敏捷&速度



SPEED JUMP ROPE/经典版速度跳绳

ASW7517GT Speed Jump Rope-Green

SPECIFICATION.

2700 (L) * 5 (d) mm.
PVC rope and PP handle.
The handle with bearing and green cover.
Packing-color box.

- 优质高强度PVC绳
- 韧性好，不缠绕、不打结
- 长度可调
- 品牌精钢轴承，高密度海绵把手
- 增强人体心血管、呼吸和神经系
统功能，培养灵活性和协调性

Color
Options: ■

CROSS JUMP ROPE/专业钢丝速度跳绳

ASW74436GT Cross Jump Rope-Red

SPECIFICATION.

3000 (L) * 2.6 (d) mm.
Steel rope with TPU cover.
PP handle with bearing.
Packing-double blister.

- 优质钢丝外包TPU
- 长度可调
- 方向轴承，阻力小
- 加长手柄
- 增强人体心血管、呼吸和神经系
统功能，培养灵活性和协调性

Color
Options: ■

CROSS JUMP ROPE/专业钢丝速度跳绳

ASW7670GT Cross Jump Rope-Red

SPECIFICATION.

3000 (L) * 2.6 (d) mm.
Steel rope with TPU cover.
Aluminium handle with bearing.
Packing double blister.

- 可调节扣设计方便自由调节绳子的长短
- 优质钢丝外包TPU，阻力小
- 加长手柄设计，整体握感舒适
- 方向轴承设计，手柄阻力小，转动更流畅
- 增强人体心血管、呼吸和神经系统功能，
培养灵活性和协调性

Color
Options: ■



REFLEX BALL/反应球

ASW75212GT Reflex Ball-Red

SPECIFICATION.

The diameter is 65mm.
The material is silica gel.
Packing-color box.

- 进口硅胶制造
- 三维六个半球面设计
- 反应能力、眼、手协调能力训练

Color
Options: ■

REFLEX BALL/反应球

ASW70453GT Reflex Ball-Red

SPECIFICATION.

The diameter is 75mm.
The material is TPE.
Packing-color box.

- 人工合成弹性体制造
- 三维六个半球面设计
- 反应能力、眼、手协调能力训练

Color
Options: ■

SPEED DISCS/标志碟

ASW77457GT Speed Discs-
Red/Yellow/Blue/Green/Orange

SPECIFICATION.

- 195*195*50mm/PC.
- The material is PE.
- Five colors of one set.
- Includes carry stand for quick clean up.
- Packing-50pcs per carton.

- 优质PE材料制成
- 韧性好, 折不断, 踩不破
- 多色组合搭配, 色彩鲜艳
- 适用于步伐练习及往返跑标志物

Color Options:



AGILITY LADDER/敏捷梯

ASW73859GT Agility Ladder-Green

SPECIFICATION.

- 4000 (L) * 420 (W) * 450 (SPACE)mm.
- 6000 (L) * 420 (W) * 450 (SPACE)mm.
- 8000 (L) * 420 (W) * 450 (SPACE)mm.
- The material is PP.
- Great for coordination and agility drills.
- Packing-storage bag for one set.

- PP防滑条, 摩擦力大
- 高密度织带
- 附有四个插销
- 可折叠, 配置收纳袋
- 灵活性、平衡性以及协调性训练

Color Options:



AGILITY LADDER/高档敏捷梯

ASW78075GT Agility Ladder-Green

SPECIFICATION.

- 6000 (L) * 470 (W) 13 rung design.
- 8000 (L) * 470 (W) 17 rung design.
- TPR flat bar and nylon strap.
- Great for coordination and agility drills.
- Packing-storage bag for one set.

- 优质TPR塑料条
- 克重大, 抗皱褶, 防滑
- 横条间隔可调
- 高密度织带
- 附有四个插销
- 可折叠, 配置收纳袋
- 灵活性、平衡性以及协调性训练

Color Options:



ADJUSTABLE HURDLES/敏捷跨栏

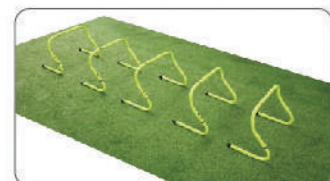
ASW78071GT Adjustable Hurdles-Green

SPECIFICATION.

- Adjustable to 200mm and 310mm.
- The material is PP.
- Packing-5pcs of one carton.

- 优质PP材质制成
- 韧性好, 不易变形
- 高度可调, 可折叠, 方便携带
- 灵敏性、反应能力及弹跳能力训练

Color Options:



LATERAL ENDURANCE HURDLES/侧向软体跨栏

ASW74157GT Lateral Endurance Hurdles-Black

SPECIFICATION.

- Size 600*200*300mm.
- The material is PVC and EPE.
- Packing-4pcs of one carton.

- 加厚夹网PVC面料
- 三角设计, 便于携带
- 内层高密度EPE棉, 弹性和硬度佳
- 灵敏性、反应能力及侧向弹跳能力训练

Color Options:



AGILITY DOTS/敏捷片

ASW75257GT Agility Dots-Black

SPECIFICATION.

- The diameter is 200mm.
- The material is rubber.
- Packing-5pcs of one bag.

- 采用优质橡胶制成
- 韧性好, 防滑设计
- 五片一组, 多色组合搭配
- 适用于步伐练习及往返跑标志物

Color Options:

02 BALANCE & STABILITY

平衡&稳定

GYM BALL / YOGA FOAM ROLLER /
YOGA BRICK / BALANCE BOARD /
MASSAGE CUSHION / YOGA MAT / AEROBIC STEP

防爆球/瑜伽泡沫轴/
瑜伽砖/平衡板/
平衡按摩垫/瑜伽垫/踏板



ANTI-BURST GYM BALL / 防爆健身球

ASW73071GT ABGB55 Anti-Burst Gym Ball-Pink
ASW73071GT ABGB65 Anti-Burst Gym Ball-Blue
ASW73071GT ABGB75 Anti-Burst Gym Ball-Green

SPECIFICATION.

·Size ϕ 55cm-900g, ϕ 65cm-1100g, ϕ 75cm-1300g.
·The material is PVC.
·with hand pump.
·Packing-color box of each one.

- 优质加厚PVC材料发泡制成
- 蜂窝气泡结构, 高强防爆性
- 配有手打式气筒
- 清晰磨砂螺旋纹路, 稳定防滑
- 柔韧、平衡性锻炼及损伤恢复

Color Options: ■ ■ ■



02 BALANCE & STABILITY 平衡&稳定



DOUBLE COLOR GYM BALL / 双色防爆健身球

ASW72601GT-DCGB65 Double Color Gym Ball-Blue
ASW72601GT-DCGB75 Double Color Gym Ball-Green

SPECIFICATION.

·Size ϕ 65cm-1100g, ϕ 75cm-1300g.
·The material is PVC.
·with hand pump.
·Double color for design.

- 优质加厚PVC材料发泡制成
- 蜂窝气泡结构, 高强防爆性
- 配有手打式气筒
- 清晰磨砂螺旋纹路, 稳定防滑
- 柔韧、平衡性锻炼及损伤恢复

Color Options: ■ ■



PESNUT BALL / 花生球

ASW74242GT Peanut Ball-Green

SPECIFICATION.

·Size 900(L)*300(ϕ)/mm, 1100g.
·The material is PVC.
·Packing-color box of each one.

- 优质加厚PVC材料发泡制成
- 清晰磨砂螺旋纹路, 稳定防滑
- 配有手打式气筒
- 柔韧、平衡性锻炼, 损伤恢复, 儿童感统训练

Color Options: ■

BOSU BALL / 高档平衡半球

ASW73612GT BBG Bosu Ball-Green
ASW73612GT BBP Bosu Ball-Pink

SPECIFICATION.

·Size 200(H)*695(ϕ)/mm, 6600g.
·The material is PVC and PP.
·with foot pump.
·Packing-carton for each one.

- 优质加厚PVC, 高强防爆
- 加厚防爆多层板及塑料外框
- 螺旋纹路, 稳定防滑
- 平衡稳定锻炼, 强化肌肉线条

Color Options: ■ ■



BALL CHAIR / 球椅

ASW78566GT Ball Chair-Grey

SPECIFICATION.

·Size 780(H)*520(ϕ)/mm.
·The material is PE.
·Fit diameter 55cm gym ball(not include ball).
·Packing-carton for each one.

- 优质PE吹塑, 厚薄均匀
- 浮点设计, 兼具按摩功能
- 刹车滚轮, 防止位移
- 改善坐姿, 损伤恢复

Color Options: ■





YOGA ROLLER / 瑜伽泡沫轴

ASW74795GT-EPEP Yoga Roller-Pink
ASW74795GT-EPEP Yoga Roller-Green

- 优质EPE制成, 密度大
- 无毒、无味、无臭
- 平衡稳定锻炼, 肌肉放松

SPECIFICATION.

Size 900(H)*150(W)mm, 800g.
The material is EPE.
Closed cell construction prevents absorption of moisture.
Packing-shrink wrap for each one.

Color Options:



YOGA ROLLER / 瑜伽泡沫轴

ASW79967GT-EPEP Yoga Roller-Pink
ASW79967GT-EPEP Yoga Roller-Green

- 优质EPE制成, 密度大
- 无毒、无味、无臭
- 平衡稳定锻炼, 肌肉放松

SPECIFICATION.

Size 450(H)*150(W)mm, 400g.
The material is EPE.
Closed cell construction prevents absorption of moisture.
Packing-shrink wrap for each one.

Color Options:

YOGA ROLLER / 瑜伽泡沫轴

ASW70234GT Yoga Roller-Green

- 优质EVA制成
- 无毒、无味、无臭
- 浮点设计, 兼具按摩功能
- 平衡稳定锻炼, 肌肉放松

SPECIFICATION.

Size 980(H)*150(W)mm, 700g.
The material is EVA.
Closed cell construction prevents absorption of moisture.
Packing-carton for each one.

Color Options:



YOGA ROLLER / 瑜伽泡沫轴

ASW78614GT Yoga Roller-Black

- 优质EPP制成
- 无毒、无味、无臭
- 浮点设计, 兼具按摩功能
- 平衡稳定锻炼, 肌肉放松
- 有一定硬度, 效果好

SPECIFICATION.

Size 610(H)*150(W)mm.
Made out of tough EPP.
Closed cell construction prevents absorption of moisture.
Packing-shrink wrap for each one.

Color Options:



YOGA ROLLER / 瑜伽泡沫轴

ASW70460GT Yoga Roller-Blue

- 优质PU发泡, 超强耐用
- 无毒、无味、无臭
- 浮点设计, 兼具按摩功能
- 平衡稳定锻炼, 肌肉放松

SPECIFICATION.

Size 315(H)*130(W)mm.
Made out of tough urethane.
Packing-shrink wrap for each one.

Color Options:



MINI YOGA ROLLER / 瑜伽泡沫轴

ASW76214GT Mini Yoga Roller-Red

- EVA发泡而成, 美国风靡款型
- 两种纹路设计, 具有按摩功能
- 短小实用, 携带方便
- 平衡稳定锻炼, 肌肉放松

SPECIFICATION.

Size 300(H)*100(W)mm.
The material is EVA+PVC.
Packing-shrink wrap for each one.

Color Options:



YOGA ROLLER / 瑜伽泡沫轴

ASW74783GT Yoga Roller-Green

- EVA发泡而成, 美国风靡款型
- 两种纹路设计, 具有按摩功能
- 平衡稳定锻炼, 肌肉放松

SPECIFICATION.

Size 445(H)*140(W)mm.
The material is EVA and ABS.
Packing-shrink wrap for each one.

Color Options:



BALANCE PODS / 平衡碗

ASW76899GT Balance Pods-Red/Blue/Purple/Green

- 优质PVC制成
- 四色一组, 色彩鲜艳
- 球面密布按摩点, 有按摩功效
- 平衡稳定、儿童感统训练

SPECIFICATION.

Size 85(H)*160(W)mm.
The material is PVC.
4Pods included per set.
Burst resistant to 300 lbs.
Packing-4 colors into one carry bag.

Color Options:



PILATES MAT / NBR健身垫

ASW7732GT-NMGY Pilates Mat-Green
ASW7732GT-NMGR Pilates Mat-Grey

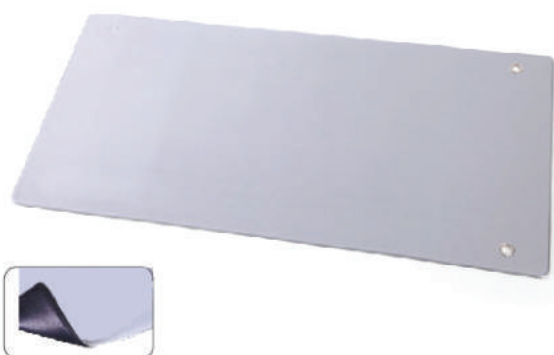
- 高密度NBR制成
- 回弹性好, 触感极佳
- 软体扣眼
- 附有便携式手提带。
- 适用于瑜伽和普拉提

SPECIFICATION.

Size 1800(L)*600(W)*12.5(D)mm.
Made out of high density NBR.
Packing-shrink wrap for each one.

Color Options:





DELUXE EXERCISE MAT / 高档双色运动垫

ASW73808GT Deluxe Exercise Mat-Grey

SPECIFICATION.

- Size 1200(L)*600 (W) *8(δ)mm.
- Made out of soft PVC.
- with two grommets of each mat.
- Packing-20pcs of each carton.

- 双色PVC, 台湾工艺制造
- 产品防滑、弹性好
- 金属扣眼, 边缘压边处理, 独家定制
- 正反两用
- 适用于瑜伽和普拉提

Color Options:



PVC YOGA MAT / PVC瑜伽垫

ASW75892GT-PYMP PVC Yoga Mat-Pink
ASW75892GT-PYMG PVC Yoga Mat-Green

SPECIFICATION.

- Size 1730(L)*610 (W) *6(δ)mm.
- Made out of soft PVC.
- Packing-shrink wrap for each one.

- 优质PVC制成
- 产品防滑, 回弹性好
- 防撕裂网设计, 安全耐用
- 适用于瑜伽和普拉提

Color Options:



TPE YOGA MAT / TPE瑜伽垫

ASW72037GT-TYMP TPE Yoag Mat-Pink
ASW72037GT-TYMG TPE Yoag Mat-Green

SPECIFICATION.

- Size 1830(L)*610 (W) *6(δ)mm.
- Made out of soft TPE.
- Packing-shrink wrap for each one.

- 国际环保TPE材料, 高回弹
- 防滑, 柔软舒适
- 优质防撕裂网, 抗拉伸, 更耐用
- 适用于瑜伽和普拉提

Color Options:



BALANCE BOARD / 平衡板

ASW70109GT Balance Board-Black

SPECIFICATION.

- Size 80(H)*380 (φ) mm.
- Made out of PP.
- Non-slip textured board for increased traction.
- 200KG weight capacity.
- Packing-color box for each one.

- 优质工程塑料制成
- 抗冲击, 静态承重200kgs
- 浮点设计, 防滑, 兼具按摩功能
- 球形基点设计, 支持360度旋转
- 平衡稳定、灵活性训练, 损伤康复

Color Options:



WOODER BALANCE BOARD / 木质平衡板

ASW72070GT Balance Board-Wood

SPECIFICATION.

- Size 75(H)*390 (φ) mm.
- Non-slip textured wood for increased traction.
- 200KG weight capacity.
- Packing-color box for each one.

- 多层复合木材, 厚度达15mm
- 磨砂防滑贴皮
- 球形基点设计, 支持360度旋转
- 平衡稳定、灵活性训练, 损伤康复

Color Options:



BALANCE BOARD / 多功能平衡板

ASW78903GT Balance Board-Blue

SPECIFICATION.

- Size 80(H)*400 (φ) mm.
- Made out of PP.
- Non-slip textured board for increased traction.
- 250KG weight capacity.
- Packing-color box of each one.

- 优质工程塑料制成, 静态承重250kgs
- 正面纹路设计, 底部包TPR, 防滑
- 圆形碗状结构支持360度旋转
- 双把手设计, 方便提拉
- 平衡稳定、灵活性训练, 损伤康复

Color Options:

BALANCE DISC / 平衡按摩垫

ASW78217GT Balance Disc-Green

SPECIFICATION.

- Size 340 (φ) mm.
- Made out of soft PVC.
- Easily inflated, it is best used on non-slip surfaces.
- Packing-color box of each one.

- 优质加厚PVC制成
- 防爆、静态承重
- 双面按摩点设计, 尖刺型和凸点
- 平衡稳定训练, 具有按摩功效

Color Options:



PU BALANCE PAD / PU 平衡垫

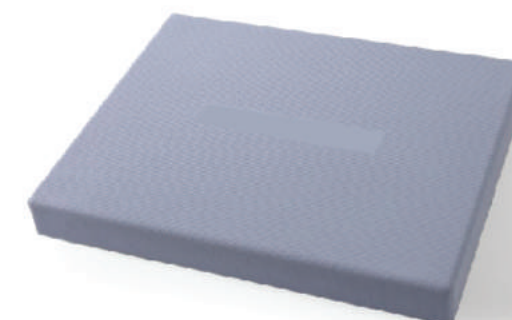
ASW70181GTPU Balance Pad-Grey

SPECIFICATION.

- Size 500 (L) *400(W)*55(H)mm.
- Made out of soft PU.
- Packing-carton for each one.

- 高档PU发泡, 环保
- 柔软、亲肤, 回弹快
- 表面平坦, 防滑
- 练习瑜伽动作和平衡性

Color Options:



SLANT BOARD / 多角度可调型拉伸训练板

ASW71183GT Slant Board-Wood

SPECIFICATION.

- Size 460(L)*360(W)*58(H)mm.
- Wood board with slip-resistant stepping surface.
- Board adjusts to 10°, 20°, 30° or 40° and folds.
- 120kg weight capacity.
- Packing-carton for each one.

- 多层板复合而成, 环保耐用
- 10度、20度、30度、40度角可调
- 可折叠设计, 方便携带
- 适用于脚部拉伸训练和康复训练

Color Options:



AEROBIC STEP / 健美踏板

ASW71283GT Aerobic Step-Pink

SPECIFICATION.

- Size 900 (L) *320(W)*150(H)mm.
- Board Adjusts to 150mm,200mm or 250mm.
- Made out of PP.
- Non-slip textured wood for increased traction.
- Packing-carton for each one.

- 优质PP制作，静态承重250kgs
- 高度三档可调：15cm,20cm,25cm
- 凹凸防滑纹路
- 适用于健美操或团体操课

Color Options:



AEROBIC STEP / 健美踏板

ASW72183GT Aerobic Step-Green

SPECIFICATION.

- Size 1080 (L) *415(W)*100 (H)mm
- Board Adjusts to 100mm,150mm or 200mm.
- Made out of fresh PE.
- Non-slip textured wood for increased traction.
- Packing-carton for each one.

- 材质为100%全新料
- 产品经久耐用，能承受250kgs
- 高度自由调节：10cm,15cm,20cm
- 沟槽防滑纹路
- 抗摔测试：1.8米高度自由落体不会摔坏
- 适用于健美操或团体操课

Color Options:



AEROBIC STEP / 健美踏板

ASW72184GT Aerobic Step-Red

SPECIFICATION.

- Size 1080 (L) *415(W)*100 (H)mm
- Board Adjusts to 100mm,150mm or 200mm.
- Made out of fresh PE.
- Non-slip textured wood for increased traction.
- Packing-carton for each one.

- 材质为100%全新料
- 产品经久耐用，能承受250kgs
- 高度自由调节：10cm,15cm,20cm
- 沟槽防滑纹路
- 抗摔测试：1.8米高度自由落体不会摔坏
- 适用于健美操或团体操课

Color Options:



03 RESISTANCE & EXPLOSIVENESS

阻力&爆发力

SOFT EXPANDER / RESISTANCE BAND / RESISTANCE BAR / SUSPENSION TRAINER / BOXING GLOVES
拉力器/拉力片/弹力棒/悬挂系统/拳击手套



SLAM BALL / 地雷球

- ASW70553GT-SLB4 4KG Slam Ball-Black
- ASW70553GT-SLB6 6KG Slam Ball-Black
- ASW70553GT-SLB8 8KG Slam Ball-Black
- ASW70553GT-SLB10 10KG Slam Ball-Black
- ASW70553GT-SLB12 12KG Slam Ball-Black

- 优质PVC
- 细砂填充配重，防漏沙设计
- 皮纹表面，有效防滑
- 适用于爆发力、体能训练

SPECIFICATION.

- Size Diameter 228mm.
- Made out of soft PVC.
- Safety is important when slamming slam balls.
- Packing-carton for each ball.

Color Options:



RESISTANCE TUBE / 一字拉力器

- ASW72939GT-LT Resistance Tube with Safety Sleeve-Green
- ASW72939GT-MED Resistance Tube with Safety Sleeve-Green
- ASW72939GT-HVY Resistance Tube with Safety Sleeve-Green

- 环保TPR弹力管外套安全布套
- 轻、中、重三种拉力级别选择
- PP把手外套海绵
- 渐进式拉力训练，改善肌力、身体活动能力和灵活性

SPECIFICATION.

- Size 1370mm(L).
- Latex free,the TPR tubing with safety sleeve.
- Three levels for choice.
- Packing-color box for each one.

Color Options:



TRAINING SET / 拉力器两件套

ASW7953GT Training Set-Red

SPECIFICATION.

- Tubing Size 1000 (L)*11(φ)*2(δ)mm. 600 (L)*10(φ)*2.5(δ)mm.
- Made out of latex with foam handle.
- 1pc resistance tube and 1pc loop tube for choice.
- Packing-bag for one set.

- 红色优质天然乳胶制造, 安全性高
- 厚度均匀, 受力均匀, 拉伸不会变形
- 一字和八字两件套, 黑色防滑把手
- 适用于手臂和腿部力量训练, 改善肌力、身体活动能力和灵活性

Color Options:



RESISTANCE BANDS / 拉力带套件

ASW70329GT Resistance Bands

SPECIFICATION.

- Size level1 1200*150*0.3mm-Yellow.
- level2 1200*150*0.4mm-Pink.
- level3 1200*150*0.5mm-Blue.
- level4 1200*150*0.6mm-Green.
- Latex free.
- Packing-4pcs per set, one set per color box.

- 环保TPE
- 一套四个拉力级别, 四种颜色
- 渐进式拉力训练, 改善肌力、身体活动能力和灵活性

Color Options:

RESISTANCE LOOPS / 迷你乳胶拉力圈套件

ASW76376GT Resistance Loops

SPECIFICATION.

- Size level1 610*50*0.7mm-Yellow.
- level2 610*50*0.9mm-Red.
- level3 610*50*1.1mm-Blue.
- level4 610*50*1.3mm-Green.
- Made out of latex.
- Packing-4pcs per set, one set per color box.

- 优质天然乳胶制造, 安全性高
- 一套四拉力级别, 四种颜色
- 适用于拉伸训练
- 可用于腿部和臀部张力训练

Color Options:



RESISTANCE BAND / TPE拉力卷

ASW74689GT TPER3 Resistance Band-Yellow
ASW74689GT TPER4 Resistance Band-Pink
ASW74689GT TPER5 Resistance Band-Blue
ASW74689GT TPER6 Resistance Band-Green

SPECIFICATION.

- Size level1 12000*150*0.3mm.
- level2 12000*150*0.4mm.
- level3 12000*150*0.5mm.
- level4 12000*150*0.6mm.
- Latex free.
- Packing-polybag per roll.

- 环保TPE
- 四个拉力级别, 四种颜色, 可选
- 渐进式拉力训练, 改善肌力、身体活动能力和灵活性

Color Options:



LATERAL STEP TRAINER / 腿部侧向力量训练器

ASW79346GT Lateral Step Trainer-Green

SPECIFICATION.

- Tubing size 300*12*5mm.
- Latex tubing with safety sleeve.
- Resists all hip and lateral movements for any sports specific drill.
- Packing-storage bag for one set.

- 优质天然乳胶管外套优质布套
- 脚裸处复合加厚泡棉
- 双管设计
- 加强腿部肌肉, 增加关节稳定性, 改善爆发性

Color Options:



CATAPULT TRAINER / 双人阻力训练套装

ASW73458GT Catapult Trainer-Green

SPECIFICATION.

- Tubing size 1200*12*5mm.
- Latex tubing with safety sleeve.
- The adjustable and padded belt is stitched and folded to foam.
- Packing-storage bag for one set.

- 优质天然乳胶管外套优质布套
- 肩部和腰部复合加厚泡棉
- 双管设计, 马甲式附件, 安全性高
- 增强在遇到阻力时的爆发性 and 对抗能力, 增加稳定性和敏捷性

Color Options:



JUMP TRAINER / 蛙跳训练套装

ASW73127GT Jump Training-Green

SPECIFICATION.

- Tubing size 1200*12*5mm.
- Latex tubing with safety sleeve.
- The adjustable and padded belt is stitched.
- Packing-storage bag for one set.

- 优质天然乳胶管外套优质布套
- 脚踝和腰部复合加厚泡棉
- 训练腿部跳跃能力, 提腿部升速度和力量

Color Options:



SPEED CHUTE / 阻力伞

ASW75717GT Speed Chute-Black

SPECIFICATION.

- Tape-1600(L)mm, chute-950(φ)mm.
- Nylon for chute.
- Packing-storage bag for one set.

- 防雨尼龙伞面
- 配件: 主伞一只, 腰带一根, 布袋一只
- 提高加速度能力, 提高肌肉耐力和爆发力

Color Options:



RESISTANCE BAR / TRX弹力棒

ASW74761GT Resistance Bar-Yellow

SPECIFICATION.

- Size of bar 1000 (L)*25(φ)mm.
- Size of tube 1600(L)mm.
- Latex tubing with nylon sleeve.
- Packing-carton for each one.

- 高强度乳胶管外套优质布套
- 喷漆金属棒, 双节设计
- 带织带保护的弹力绳有效长度1500mm, 安全系数更高
- 适用于训练在旋转中的力量, 爆发力, 核心稳定性等功能练

Color Options:

WOODEN GYM RING / 木头吊环

ASW71326GT Wooden Gym Ring-Wood

SPECIFICATION.

- Ring size 235 (out φ)*28 (handle φ)mm.
- Adjusted strap-4600(L)mm.
- Packing-color box for each one.

- 桦木多复合制成
- 优质加密尼龙带 (可以承受450kg的静止重量)
- 镀锌调节扣, 锯齿结构, 咬合力更强
- 2.8cm直径木环, 宽度2.5*4.8M长织带
- 利用自身体重训练的器械, 主要是强健身体, 锻炼胸大肌、背阔肌、肱二头肌、肱三头肌



POWER LOOPS /力量训练圈

ASW76799GT Power Loops

SPECIFICATION.

- Size level1 2080*13*4.5mm-red.
- level2 2080*21*4.5mm-black.
- level3 2080*32*4.5mm-purple.
- level4 2080*44*4.5mm-green.
- level5 2080*64*4.5mm-blue.
- Made out of latex.
- Five levels per set.
- Packing-polybag per loop.

- 优质天然乳胶制造
- 厚度均匀, 受力均匀, 拉伸不会变形
- 宽度不同, 拉力不同, 多种颜色选择
- 能自由调整负荷强度和方向, 可以有效改善肌力、身体活动能力和灵活性

Color Options:



SUSPENSION SYSTEM /悬吊训练系统

ASW81326GT Suspension System-Green&Grey

SPECIFICATION.

- Adjust from 160cm TO 270cm.
- Made out of PP.
- Packing-net bag for each set.

- 高密度PP织带
- 快速调节金属扣件
- 防滑包塑把手, 握感舒适
- 长度可调范160cm-270cm
- 全身抗阻力训练, 提高力量、柔韧性和核心稳定性

Color Options:



TRAINING KIT /力量训练套件

ASW78398GT Training kit

SPECIFICATION.

- Tubing size 1400(L).
- Made out of latex.
- Five levels, light-purple, medium-blue, heavy-yellow, x-heavy-red, ultra-heavy-green.
- Packing-color box for one set.

- 优质天然乳胶制造
- 高密度织带外套海绵把手
- 配置5个不同级别拉力的乳胶管、2个把手、2个脚蹼、1个闭门器, 外加一个收纳袋, 使用时拉力任意组合, 可实现多种需求
- 渐进式拉力训练, 改善肌力、身体活动能力和灵活性

Color Options:



SUSPENSION SYSTEM /悬吊训练系统

ASW81326GT Suspension System-Pink

SPECIFICATION.

- Adjust from 160cm TO 270cm.
- Made out of nylon.
- Packing-net bag for each set.

- 高密度尼龙织带
- 快速调节金属扣件, 泡棉把手
- 长度可调范160cm-270cm
- 全身抗阻力训练, 提高力量、柔韧性和核心稳定性

Color Options:



SUSPENSION SYSTEM /悬吊训练系统

ASW71372GT Suspension System-Yellow&Black

SPECIFICATION.

- Adjust from 116cm TO 255cm.
- Made out of nylon, with stronger hooks.
- Packing-net bag for each set.

- 安全带级别的超强尼龙织带
- 快速调节金属扣件, 防盗设计挂钩
- 长度可调范围116cm-255cm
- 独立调节防滑包塑把手, 握感舒适
- 全身抗阻力训练, 提高力量、柔韧性和核心稳定性

Color Options:



POWER TRAINING ROPE /能量甩绳

ASW82326GT-TR9 9m Training Rope-Black
ASW82326GT-TR12 12m Training Rope-Black
ASW82326GT-TR15 15m Training Rope-Black

SPECIFICATION.

- Rope size φ38mm.
- Made out of PE with stronger handle.
- Weight 9M-6.1kg, 12M-8kg, 15M-9.5kg.
- Packing-carton for each one.

- PE绳子编织
- 把手上采用带胶热收缩手柄, 防脱落
- 提高耐力, 加强背部、肩部和手臂的肌肉, 增加反应时间和代谢率

Color Options:



TRAINING GLOVES /拳击手套

ASW76057GT Training Gloves-Green
ASW76057GT Training Gloves-Red
ASW76057GT Training Gloves-Black

SPECIFICATION.

- Three levels for choice.
- PU for cover.
- Mesh panels in the palms improve air flow to keep the user's hands cool and help the gloves dry quicker after use.
- Packing-one pair per carton.

- 高级耐磨抗撕裂PU表皮
- 8盎司绿色, 10盎司绿色, 12盎司黑色
- 掌心透气孔设计, 透气, 排汗不闷热
- 魔术贴快速调节
- 适用于拳击训练

Color Options:



POWER TRAINING ROPE /能量甩绳

ASW71456GT Training Rope-Black

SPECIFICATION.

- Size φ38mm*12(L)M.
- Made out of terylene.
- Packing-carton for each one.

- 双色涤纶绳子网状编织
- 把手上采用带胶热收缩手柄, 防脱落
- 提高耐力, 加强背部、肩部和手臂的肌肉, 增加反应时间和代谢率

Color Options:

CLIMB TRAINING ROPE /攀爬绳

ASW09326GT Climb Training Rope-Black

SPECIFICATION.

- Size φ38mm*4.5m.
- Made out of PE.
- with one steel handle of each rope.
- Packing-carton for each one.

- PE绳子编织
- 把手上采用带胶热收缩手柄, 防脱落
- 一侧带有镀锌D型环
- 适用于攀爬训练, 提高耐力, 加强背部、肩部和手臂的肌肉

Color Options:

CURVED HOOK AND JAB PADS /拳击手靶

ASW73262GT Curved Hook and Jab Pads-Green

SPECIFICATION.

- Size 270 (L)*185(W)*160(H)mm.
- PU for cover.
- Packing-one pair per carton.

- 进口高档PU面料
- 外形按照手掌的弧度设计
- 内部采用高弹性压力棉,
- 手掌支撑设计, 采用透气面料
- 提高拳击击打的准确性、出击速度、反应速度和维持身体重心平衡的能力。

Color Options:



PUNCH BAG / 拳击沙袋

ASW74741GT Punch Bag-Red

SPECIFICATION.

- Size 30kg,1000(H)*340(φ)mm.
- PU for cover.
- Packing-carton for each one.

- 外胆PU仿皮
- 内胆使用高强度EPE棉包裹, 填充充实
- 配有优质镀锌加粗铁链
- 适用于拳击训练

Color Options:



POWER-PLYO BOXES / 塔式跳箱

ASW83715GT Power-Plyo Boxes-Red

SPECIFICATION.

- Size Level 03 356*356*460mm,8.5kg.
- Level 04 385*385*610mm,10kg.
- Level 05 419*419*760mm,13kg.
- Level 06 508*508*910mm,16kg.
- Square tubular steel construction, stackable.
- 18mm T board covered with 4mm T solid non-slip rubber mat w/white speckles.
- Packing-4pcs per set, carton for one set.

- 采用顶部面18mm 环保的多层板, 6mm厚的进口环保、防滑型橡胶颗粒板。
- 防滑底座设计, 四个高度, 灵活选择。
- 适用于弹跳训练, 可作为各种训练的辅助用具和编组式的起跳练习。

Color Options:



PREMIUM POWER-PLYO BOXES / 方形豪华跳凳

ASW86113GT Premium Power-Plyo Boxes-Black

SPECIFICATION.

- Size Level 01 500*500*300mm,12.5kg.
- Level 02 600*600*450mm,17kg.
- Level 03 700*700*600mm,23kg.
- Level 04 800*800*750mm,27.5kg.
- Square tubular steel construction, stackable.
- 3cm x 3cm x 1.5mm T Frame tubes powder coated in silver + 18mm T board covered with 6mm T solid non-slip rubber mat w/ white speckles.
- Packing-4pcs per set, carton for one set.

- 采用顶部面18mm 环保的多层板, 6mm厚的进口环保、防滑型橡胶颗粒板。
- 防滑底座设计, 四个高度, 灵活选择。
- 底座为30*30*1.5mm的方管, 烤漆处理, 安全耐用。
- 适用于弹跳训练, 可作为各种训练的辅助用具和编组式的起跳练习。

Color Options:

ADJUSTABLE LATERAL PLYO BOX / 侧向跑台

ASW88610GT Adjustable Lateral Plyo Box-Red

SPECIFICATION.

- Size 2130X470X136mm.
- Quickly adjust sides of platform to 25°, 35°, or 45° to target all muscles of the ankle, leg and hip.
- Each side holds a 45 lbs. weight plate (sold separately).
- Packing-carton for one set.

- 表面包裹防滑条纹革, 可调节侧面高度。
- 提高身体协调性以及灵敏性。可以锻炼腿部肌肉力量。
- 友情提示: 使用时, 底部需放置铃片负重。

Color Options:



POWER BOX / 木质跳箱

ASW83788GT POWER BOX-WOOD

SPECIFICATION.

- Size 600*500*400mm
- It provides 3 surface heights for plyometric training all in one box.
- Each side of the solid wood construction is clearly marked with height measurement-400mm, 500mm and 60mm.
- Packing-needs to fit, carton for one set.

- 加厚型20mm多层复合木板, 内部设有支架加固, 安全可靠
- 可调高度40、50、60cm, 自然风格
- 适用于弹跳训练, 不同高度可作为各种训练的辅助用具和编组式的起跳练习

Color Options:

JUMP SAFE FOAM PLYO BOXES / 海绵跳箱

ASW87876GT Jump Safe Foam Plyo Boxes

SPECIFICATION.

- Size Level 01 900(L)*750 (w)*300(H)mm-Green.
- Level 01 900(L)*750 (w)*450(H)mm-Blue.
- Level 01 900(L)*750 (w)*600(H)mm-Red.
- Safe-made using soft,EPE foam with PVC cover.
- Boxes can be used together or individually.
- Packing-carton for each one.

- 加厚夹网PVC面料, 外表美观, 便于清理
- 内层高密度EPE棉, 有一定的弹性和硬度, 安全度高
- 拉链设计, 方便透气和清理内填充物
- 附有强力魔术贴, 可单独、亦可组合使用
- 适用于弹跳训练, 可作为各种训练的辅助用具和编组式起跳练习。

Color Options:



JUMP SAFE FOAM PLYO BOXES / 海绵跳箱

ASW87878GTB Jump Safe Foam Plyo Boxes

SPECIFICATION.

- Size Level 01 900(L)*750 (w)*300(H)mm-Green.
- Level 01 900(L)*750 (w)*450(H)mm-Blue.
- Level 01 900(L)*750 (w)*600(H)mm-Red.
- Safe-made using soft, dense foam and EPE foam with PVC cover.
- Boxes can be used together or individually.
- Packing-carton for each one.

- 侧面加厚夹网PVC面料，上下层加厚防滑PVC
- 内层高密度EPE棉和高密度再生海绵，有一定的弹性和硬度，安全度高
- 拉链设计，方便透气和清理内填充物
- 附有强力魔术贴，可单独、亦可组合使用
- 适用于弹跳训练，可作为各种训练的辅助工具和编组式起跳练习

Color Options:



3 IN 1 SOFT PLYO BOX / 三合一海绵跳箱

ASW87110GT 3 in 1 Soft Plyo Box-Black

SPECIFICATION.

- Size 75*61*51cm.
- Safe-made using soft, dense foam with anti-slip landing zones.
- It is the perfect tool to introduce beginners to plyometrics.
- Packing-carton for each one.

- 加厚防滑夹网PVC
- 内层采用高密度再生海绵配重，安全度高
- 多彩印刷，特别适用于初学者
- 适用于弹跳训练，可作为各种训练的辅助工具和编组式起跳练习。

Color Options:



POWER SLED / 豪华雪橇

ASW80710GT Power Sled-Red

SPECIFICATION.

- Main tube 60*60*3MM, Ø48*2mm and Ø46*2mm
- The power sled can be used for pushing and pulling exercises.
- Ideally this should be the Speed Track or another suitable artificial turf surface.
- Assembly:100x61x98cm.
- Packing-carton for one set.

- 加厚钢管，中间可放置两片配合使用
- 红黑搭配，麻面防滑把手
- 可以后推或前拉训练，增加运动中的体能和爆发力
- 建议在人造草坪上使用本品

Color Options:



04 REHABILITATION & RELAXATION

康复&放松

- BUDDY-BAR / STRETCH STRAP /
- HAND GRIP / FLEX BAR /
- MASSAGE BALL / MEDICINE BALL /
- WEIGHTED BALL / PILATES RING / MASSAGER
- 摩登棒/伸展带/
- 握力器/屈膝棒/
- 按摩球/重力球/
- 墙球/普拉提圈/按摩棒



独特造型 专利设计



进口合金管
内置合金钢丸

三重密封设计

BAR / 摩登棒

ASW79478GT-BDBM M# Buddy Bar-Red
ASW79478GT-BDBM L# Buddy Bar-Red

SPECIFICATION.

- M# 425 (L)*50(Ø)mm,900g.
- L# 425 (L)*50(Ø)mm,1350g.
- Made out of alloy and steel sand.
- Packing-color box for one pair.

- 进口合金管，内置合金钢丸
- 三重密封设计
- 摩登专利产品，风靡全球。
- 燃烧卡路里，增强核心及上下肢的力量

Color Options:

STRETCH STRAP / 豪华型伸展带

ASW71220GT Stretch Strap-Green

SPECIFICATION.

- Size 180(L)*2.5(W)cm.
- Made out of cotton and latex.
- Provide additional support while progressively stretching the major muscle groups of the body.
- Packing-color box for each one.

- 采用天然环保棉加乳胶丝编织而成
- 多档位选择
- 筋骨伸展，辅助固定瑜伽姿势

Color Options:





POWER BALL /腕力球

ASW79677GT Power Ball-Blue

- 进口pc注塑壳体，强度高，内球是进口耐低温材料
- 硅胶材质防滑圈，手感好
- 内置炫目led灯
- 绳式启动
- 训练腕部和指尖的抓握力

SPECIFICATION.

· Size 72(L)*63(H)mm.
 · Made out of PC.
 · Exercise hand and arm strength.
 · Packing-color box for each one.

Color Options:



GRIP BALL /握力球

ASW79978GT-GBB Grip Bal-Blue
 ASW79978GT-GBO Grip Bal-Orange
 ASW79978GT-GBP Grip Bal-Pink

- 优质TPR制作
- 鸡蛋外形
- 指捏合力锻炼，指间按摩

SPECIFICATION.

· Size 140(L)*120(W)mm.
 · Made out of TPR.
 · Packing-double blister for each one.

Color Options:



POWER BALL WITH COUNT /计数腕力器

ASW73200GT Power Ball with Count-Blue

- 进口pc注塑壳体，强度高，内球是进口耐低温材料
- 硅胶材质防滑圈，手感好
- 液晶计数器，可以显示具体的转速，最高转速，可分别设置测定30,60,90秒内的圈数
- 绳式启动
- 训练腕部指尖的抓握力

SPECIFICATION.

· Size 73(L)*63(H)mm.
 · Made out of PC.
 · Packing-color box for each one.

Color Options:



ADJUSTABLE HAND GRIP /可调节握力器

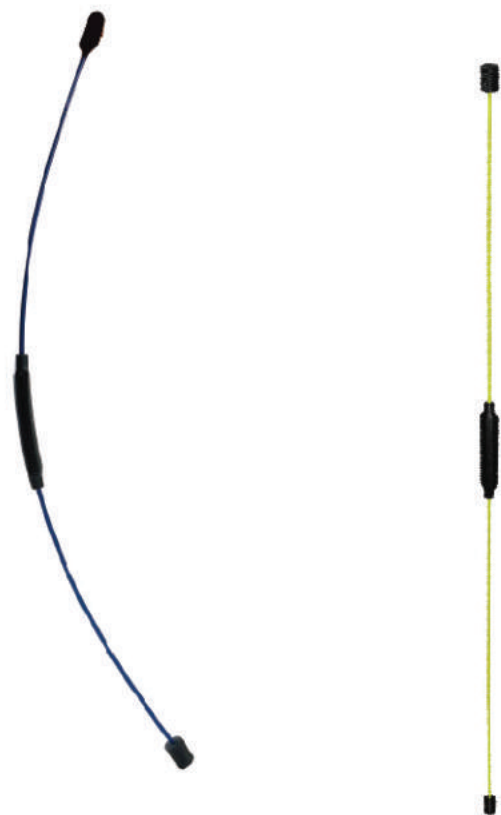
ASW78284GT Adjustable Hand Grip-Green

- TPR包胶，PP手柄
- 高韧性弹簧，直径4mm
- 力度可调节5-20kg
- 增强手部肌肉力量，促进血液循环

SPECIFICATION.

· Size 140(L)*120(W)mm.
 · Made out of PP and TPR.
 · Adjusts from 5-20kg.
 · Packing-color box for each one.

Color Options:



FLEX BAR /甩脂棒

ASW71072GT Flex Bar-Green

- 进口高强度防断玻璃纤维制成
- 震频率高，弹性好
- 手柄防滑，握感舒适
- 一体式稳固成型设计
- 基于共振原理，进行深层肌肉的锻炼

SPECIFICATION.

· Size 1600(L)mm.
 · Made out of glass fibre and TPR.
 · Non-slip handle.
 · Packing-20pcs of one carton.

Color Options:

WEIGHTED BAR /豪华体操棒

ASW77813GT-WTB2 2kg Weighted Bar-Yellow
 ASW77813GT-WTB3 3kg Weighted Bar-Purple
 ASW77813GT-WTB4 4kg Weighted Bar-Blue
 ASW77813GT-WTB5 5kg Weighted Bar-Green
 ASW77813GT-WTB6 6kg Weighted Bar-Grey

- PU塞头，经久耐用
- 满版印刷，颜色艳丽迷人
- 适用于团体课程

SPECIFICATION.

· All bars are the same length and diameter, 1235(L)X32(D)mm.
 · PU end cap,printed steel bar.
 · Packing-paper tube for each bar.

Color Options:



MASSAGE BALL /迷你按摩球

ASW70313GT Massage Ball-Red

- 选用优质PVC制成
- 柔韧、安全、舒适
- 加长按摩点设计
- 可消除疲劳，促进血液循环

SPECIFICATION.

· Size Ø90mm,60g.
 · Made out of PVC.
 · Unique spike design provides massage to promote the recovery of sore, tight and tired muscles.

Color Options:



DOUBEL GRIP MEDICINE BALL /双把手橡胶重力球

ASW71376GT-DGMB3 3KG Doubel Grip Medicine Ball-Pink&Grey
 ASW71376GT-DGMB4 4KG Doubel Grip Medicine Ball-Yellow&Grey
 ASW71376GT-DGMB5 5KG Doubel Grip Medicine Ball-Blue&Grey
 ASW71376GT-DGMB6 6KG Doubel Grip Medicine Ball-Pink&Grey

- 采用全天然橡胶制作
- 双手把设计
- 颜色鲜艳，回弹性好
- 常用于康复治疗和力量训练

· Rubber.
 · The diameter is 230mm for 3-4kg,275cm for 5-6kg.
 · Packing-carton for each ball.

Color Options:

MEDICINE BALL WITH HANDPRINT /手印重力球

ASW86867GT-MB1 1KG Medicine Ball with Green Handprint-Grey
 ASW86867GT-MB2 2KG Medicine Ball with Green Handprint-Grey
 ASW86867GT-MB3 3KG Medicine Ball with Green Handprint-Grey
 ASW86867GT-MB4 4KG Medicine Ball with Green Handprint-Grey
 ASW86867GT-MB5 5KG Medicine Ball with Green Handprint-Grey
 ASW86867GT-MB6 6KG Medicine Ball with Green Handprint-Grey
 ASW86867GT-MB7 7KG Medicine Ball with Green Handprint-Grey
 ASW86867GT-MB8 8KG Medicine Ball with Green Handprint-Grey
 ASW86867GT-MB9 9KG Medicine Ball with Green Handprint-Grey
 ASW86867GT-MB10 10KG Medicine Ball with Green Handprint-Grey

- 采用全天然橡胶制作
- 具有良好的反弹力和耐用性
- 双色手印，精美防滑纹路
- 防漏气嘴
- 常用于康复治疗和力量训练

SPECIFICATION.

· Rubber.
 · The diameter is 230mm for 3-4kg,275cm for 5-6kg.
 · Packing-carton for each ball.

Color Options:





WALL BALL/墙球

ASW72619GT-WB3 3KG Wall Ball-Black
ASW72619GT-WB4 4KG Wall Ball-Black
ASW72619GT-WB5 5KG Wall Ball-Black
ASW72619GT-WB6 6KG Wall Ball-Black
ASW72619GT-WB7 7KG Wall Ball-Black
ASW72619GT-WB8 8KG Wall Ball-Black
ASW72619GT-WB9 9KG Wall Ball-Black
ASW72619GT-WB10 10KG Wall Ball-Black

- 高级PU、合成纤维加强缝切
- 防滑性能好
- 内填充环保棉，重心不倾斜
- 具有良好的反弹力和耐用性
- 常用于康复治疗 and 力量训练

SPECIFICATION.

- Size 350(φ)mm.
- PU cover, Sand weighted filler.
- Double covered for extra durability.
- Packing-carton for each ball.

Color Options:



PILATES RING/高档普拉提圈

ASW71821GT Pilates Ring-Green

- 采用玻璃纤维高弹片制成
- 高品质泡沫套管，防滑、亲肤
- TPR材质把手，贴合手掌设计
- 可用于普拉提和康复训练

SPECIFICATION.

- Size Ø390mm.
- Fiberglass ring, foam cover, plastic handles.
- Packing-color box for each one.

Color Options:



MASSAGER SETICK/双色按摩棒

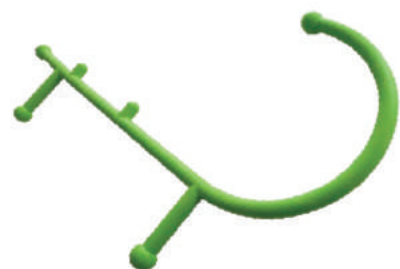
ASW73048GT Massage Stick-Green

- 不锈钢轴心，外包环保PP
- 双色TPE把手，浮点防滑设计
- 凹槽按摩球，按摩效果佳
- 舒筋活血 放松身体，促进血液循环

SPECIFICATION.

- Size 450(L)mm.
- Made out of PP and TPE.
- Make the musculature part.
- Packing-box for each bar.

Color Options:



MASSAGER CANE/多功能按摩杖

ASW70828GT Massage Stick-Green

- 尼龙
- 手杖造型，有效作用于人手无法按摩的部位
- 多把手圆头设计，有效增强按摩效果
- 舒筋活血 放松身体，促进血液循环

SPECIFICATION.

- Size 61(L)*38(W)mm.
- Made out of nylon.
- Massager cane is made to get to those hard-to-reach places with its hook shape and massage balls on the ends.
- Packing-box for each bar.

Color Options:



MASSAGE BALL/按摩球

ASW89677GT Massage Ball-Orange

- 球面防滑设计
- 可有效按摩背部部位
- 舒筋活血 放松按摩，促进血液循环

SPECIFICATION.

- Size 65(φ)mm, 150g.
- Made out of TPR.
- for massage and trigger point release.
- Packing-box for each bar.

Color Options:



MASSAGE BALL/联体按摩球

ASW82670GT Massage Ball-Orange

- 根据人体力学，联体设计
- 可有效按摩背部部位
- 表面防滑处理，不吸水
- 舒筋活血 放松按摩，促进血液循环

SPECIFICATION.

- Size 65(φ)mm, 280g.
- Made out of TPR.
- Accelerate recovery from back pain and injuries with the ergonomic, spinefriendly design of massage ball.

Color Options:

05
STRENGTH TRAINING
力量训练



DUMBBELL / DUMBBELL SET / BARBELL SET /
20KGS PUMP SET WITH SPRING COLLARS / BAR /
WRIST WEIGHT / WEIGHTED TRAINING VEST / SAND BAG

哑铃/哑铃套装/杠铃/
20KG彩色包胶杠铃成套件/
杆子/沙袋/负重衣/沙包

WATER BAG/能量用柱

ASW70653GT-S Power Water Bag-Red
ASW70653GT-M Power Water Bag-Red
ASW70653GT-L Power Water Bag-Red

SPECIFICATION.

- 150(p)*1100(L)mm.
- M 150(p)*1200(L)mm.
- L 150(p)*1300(L)mm.
- Made out of PVC.
- with pump.

Color Options:

- 皮划艇工艺
- 加强PVC面料
- 配大号脚踏气筒
- 加密海绵把手
- 灌水充气使用，自由配重



OLYMPIC GRIP PLATES / 包胶杠铃片

ASW81900GT-RP125 1.25kg Olympic Grip Plate-Black
ASW81900GT-RP025 2.5kg Olympic Grip Plate-Black
ASW81900GT-RP05 5kg Olympic Grip Plate-Black
ASW81900GT-RP10 10kg Olympic Grip Plate-Black
ASW81900GT-RP15 15kg Olympic Grip Plate-Black
ASW81900GT-RP20 20kg Olympic Grip Plate-Black
ASW81900GT-RP25 25kg Olympic Grip Plate-Black

- 采用优质橡胶, 气味小
- 中孔使用不锈钢钢套, 优质铁心
- 三个手抓孔设计, 使用便捷



SPECIFICATION.

- Rubber coated.
- 3 grip areas make loading and unloading bars easy.
- with upturned steel ring.

Color Options:



RUBBER SOLID COLOR TRAINING BUMPER PLATES / 彩色包胶训练杠铃片

ASW82903GTRBP05 5kg Rubber Solid Color Training Bumper Plate-Black
ASW82903GTRBP10 10kg Rubber Solid Color Training Bumper Plate-Blue
ASW82903GTRBP15 15kg Rubber Solid Color Training Bumper Plate-Yellow
ASW82903GTRBP20 20kg Rubber Solid Color Training Bumper Plate-Blue
ASW82903GTRBP25 25kg Rubber Solid Color Training Bumper Plate-Red

- 优质耐用橡胶
- 镀硬铬钢套
- 直径统一为45CM, 国际IWF标准
- 光滑表面

SPECIFICATION.

- Large hard chrome plated hub.
- Beveled edges for easy pick up.
- Durable virgin rubber.
- Bumper discs have 450mm outer diameter for 10-25kg (IWF standards).

Color Options:



URETHANE COMPETITION COLORED BUMPER PLATE / 彩色PU钢套竞赛铃片

ASW87844GT-UBP05 5kg Urethane Competition Colored Bumper Plate-Black
ASW87844GT-UBP10 10kg Urethane Competition Colored Bumper Plate-Green
ASW87844GT-UBP15 15kg Urethane Competition Colored Bumper Plate-Yellow
ASW87844GT-UBP20 20kg Urethane Competition Colored Bumper Plate-Blue
ASW87844GT-UBP25 25kg Urethane Competition Colored Bumper Plate-Red

- 采用优质PU, 无味
- 耐用、抗衰
- 中孔使用不锈钢钢套, 优质铁心
- 三个手抓孔设计, 使用便捷

SPECIFICATION.

- Large hard chrome plated hubs.
- Premium urethane surface coating.
- Beveled edges for easy pickup.
- Bumper plates have 450mm outer diameter for 10-25kg (IWF standards).

Color Options:

URETHANE OLYMPIC GRIP PLATES / 高档PU杠铃片

ASW72800GT-UP125 1.25kg Urethane Olympic Grip Plate-Black
ASW72800GT-UP025 2.5kg Urethane Olympic Grip Plate-Black
ASW72800GT-UP05 5kg Urethane Olympic Grip Plate-Black
ASW72800GT-UP10 10kg Urethane Olympic Grip Plate-Black
ASW72800GT-UP15 15kg Urethane Olympic Grip Plate-Black
ASW72800GT-UP20 20kg Urethane Olympic Grip Plate-Black
ASW72800GT-UP25 25kg Urethane Olympic Grip Plate-Black

- 采用优质PU, 无味
- 耐用、抗衰
- 中孔使用不锈钢钢套, 优质铁心
- 三个手抓孔设计, 使用便捷

SPECIFICATION.

- Strong, durable urethane-covered weight plates resist wear and tear better than traditional rubber.
- 3 grip areas make loading and unloading bars easy.
- with upturned steel ring.

Color Options:



URETHANE DUMBBELLS / 高档PU哑铃

ASW71955GT-UDS1 Solid Head Urethane Dumbbell Set 2-20kg-Black
ASW71955GT-UDS2 Solid Head Urethane Dumbbell Set 12-30kg-Black
ASW71955GT-UDS3 Solid Head Urethane Dumbbell Set 22-30kg-Black
ASW71955GT-UDS4 Solid Head Urethane Dumbbell Set 32-40kg-Black
ASW71955GT-UDS5 Solid Head Urethane Dumbbell Set 42-50kg-Black

- 环保无味PU
- 直把设计, 镀硬铬手柄
- 全钢内芯, 整体焊接
- 整体硫化, 彩色盖片
- 2kg 间隔

SPECIFICATION.

- Solid steel heads.
- Premium urethane surface.
- Color urethane end caps.
- 2kg increments.
- Stainless steel ring at joint.
- Ultra durable hard chrome plated grips (2-12kg are 29mm, 14-22kg are 32mm, and 24-60kg are 34mm diameter grips).

Color Options:



RUBBER DUMBBELL / 圆头整体包胶哑铃

ASW82000GT2.5-50kg Rubber Dumbbells-Black
ASW82000GT S1 Rubber Dumbbell Set 2.5-15kg-Black
ASW82000GT S2 Rubber Dumbbell Set 2.5-25kg-Black
ASW82000GT S3 Rubber Dumbbell Set 27.5-37.5kg-Black
ASW82000GT S4 Rubber Dumbbell Set 40-50kg-Black

- 钢芯外包橡胶
- 电镀弧形手柄, 经典款式
- 铁芯和杆子满焊处理
- 彩色PVC标贴
- 2.5kg间隔

SPECIFICATION.

- Solid steel heads.
- Color end caps, arc handle.
- 2.5kg increments.
- chromed grips (2.5-12.5kg are 28mm, 15-37.5kg are 30mm, and 32.5-50kg are 32mm diameter grips).

Color Options:



NEOPRENE DUMBBELL / 麻面浸塑骨头哑铃

ASW81189GT-BND05 0.5kg Bone Neoprene Dumbbell-Yellow
ASW81189GT-BND01 1kg Bone Neoprene Dumbbell-Green
ASW81189GT-BND02 2kg Bone Neoprene Dumbbell-Orange
ASW81189GT-BND03 3kg Bone Neoprene Dumbbell-Blue
ASW81189GT-BND04 4kg Bone Neoprene Dumbbell-Red

- NEOPRENE环保材质, 色彩艳丽
- 造型独特, 麻面处理, 防滑, 握感极佳
- 规格0.5/1/2/3/4kg

Color Options:



VINYL KETTLEBELL / 光面浸塑哑铃

ASW81188GT/VKB05 5lb Vinyl Kettlebell-Orange
ASW81188GT/VKB10 10lb Vinyl Kettlebell-Rubine Red
ASW81188GT/VKB15 15lb Vinyl Kettlebell-Green
ASW81188GT/VKB20 20lb Vinyl Kettlebell-Blue
ASW81188GT/VKB25 25lb Vinyl Kettlebell-Yellow
ASW81188GT/VKB30 30lb Vinyl Kettlebell-Red
ASW81188GT/VKB35 35lb Vinyl Kettlebell-Purple
ASW81188GT/VKB40 40lb Vinyl Kettlebell-Dark Green
ASW81188GT/VKB45 45lb Vinyl Kettlebell-Grey

- 优质铸铁
- 烤漆手柄
- 彩色浸塑, 色彩艳丽
- 规格
5/10/15/20/25/30/35/40/45LB



· Baked hammertone handle.
· Vinyl cover.



URETHANE KETTLEBELL / 高档PU壶铃

ASW71787GTUK8 8kg Urethane Kettlebell-Black
ASW71787GTUK10 10kg Urethane Kettlebell-Black
ASW71787GTUK12 12kg Urethane Kettlebell-Black
ASW71787GTUK14 14kg Urethane Kettlebell-Black
ASW71787GTUK16 16kg Urethane Kettlebell-Black
ASW71787GTUK18 18kg Urethane Kettlebell-Black
ASW71787GTUK20 20kg Urethane Kettlebell-Black

- 环保无味PU
- 镀铬手柄
- 8-20kg, 2kg间隔

· Ultra durable hard chrome plated handle.
· Premium urethane surface.

Color Options:

ADJUSTABLE SOFT KETTLEBELL / 可调节壶铃

ASW82290GT Adjustable Kettlebell-Green

SPECIFICATION.

- Soft weight plate.
- Adjusts weight.
- Handle-2lbs, plate-3lbs*2pcs, 6lbs*2pcs.

- 软体配重, 安全可靠
- 可调重量
- 泡棉把手, 手感好

Color Options:



CHROMED DUMBBELLS / 电镀哑铃球

ASW82390GT 1-10kg Chromed Dumbbell Set

SPECIFICATION.

- Arc handle.
- Solid Head with color label.
- Handle-diameter 27.5mm.

- 电镀钢芯
- 弧形设计手柄, 握感舒服
- 防脱落设计
- 重量1-10kg, 1kg间隔

Color Options:



NEOPRENE DUMBBELL SET / 浸塑哑铃套件

ASW82557GT 6kg Neoprene Dumbbell Set

SPECIFICATION.

- Neoprene Dumbbell 0.5kg*2,1kg*2,1.5kg*2pcs.
- with one plastic holder.

- 6kgs浸塑哑铃豪华套装
- ABS支架
- 0.5kg*2pcs, 1kg*2pcs, 1.5kg*2pcs.

Color Options:



CHROMED DUMBBELL SET / 15KG电镀哑铃成套件

ASW77788GT 15kg Chromed Dumbbell Set

SPECIFICATION.

- Chromed plates 0.5kg*4pcs, 1kg*8pcs.
- Chromed bar 30*350mm with 4 star collars.
- 1pc PE box for packing.

表面是一层光滑的电镀层, 光滑漂亮抗磨损, 里面为铸铁, 采用无味技术, 组装拆卸容易, 体积小, 便于携带

Color Options:



CHROMED DUMBBELL SET / 15KG电镀哑铃成套件

ASW82456GT 15kg Chromed Dumbbell Set

SPECIFICATION.

- Chromed plates 0.5kg*4pcs, 1kg*8pcs.
- Chromed bar 30*350mm with 4 star collars.
- 1pc PE box for packing.

表面是一层光滑的电镀层, 光滑漂亮抗磨损, 里面为铸铁, 采用无味技术, 组装拆卸容易, 体积小, 便于携带

Color Options:



RUBBER BARBELL / 固定式包胶手杠铃

ASW71189GT-RBS1 Rubber Barbell Set 10-20kg (5 pcs)
ASW71189GT-RBS2 Rubber Barbell Set 25-45kg (5 pcs)
ASW71189GT-RBS3 Rubber Barbell Set 10-45kg (10 pcs)

SPECIFICATION.

- Solid steel head.
- Durable virgin rubber surface.
- 10-20kg in 2.5kg increments, 25-45kg in 5kg increments.
- Chrome plated grips in 28mm (10-15kg) and 30mm (20-45kg) diameter grips, inside length 950mm.

- 钢芯外包橡胶
- 电镀直把, 经典款式
- 铁芯和杆子满焊处理
- 彩色PVC标贴
- 内长950MM
- 10-20kg 2.5kg间隔, 25-45kg 5kg间隔

Color Options:



EZ CURL RUBBER BARBELL / 固定式包胶手杠铃

ASW71189GT-RBS1 Rubber EZ Curl Barbell Set 10-20kg (5 pcs)
ASW71189GT-RBS2 Rubber EZ Curl Barbell Set 25-45kg (5 pcs)
ASW71189GT-RBS3 Rubber EZ Curl Barbell Set 10-45kg (10 pcs)

SPECIFICATION.

- Solid steel head.
- Durable virgin rubber surface.
- 10-20kg in 2.5kg increments, 25-45kg in 5kg increments.
- Chrome plated grips in 28mm (10-15kg) and 30mm (20-45kg) diameter grips, inside length 950mm.

- 钢芯外包橡胶
- 电镀曲杆, 经典款式
- 铁芯和杆子满焊处理
- 彩色PVC标贴
- 内长950MM
- 10-20kg 2.5kg间隔, 25-45kg 5kg间隔

Color Options:



URETHANE BARBELL / 豪华PU直杆杠铃

ASW72182GT-PBS1 Urethane Barbell Set 10-20kg (5 pcs)
ASW72182GT-PBS2 Urethane Barbell Set 25-45kg (5 pcs)
ASW72182GT-PBS3 Urethane Barbell Set 10-45kg (10 pcs)

SPECIFICATION.

- Solid steel heads.
- Premium urethane surface.
- Color urethane end caps.
- 10-20kg in 2.5kg, 25-45kg in 5kg increments.
- Ultra durable hard chrome plated grips in 32mm (10-20kg) and 34mm (25-45kg) diameter grips.

- 环保无味PU
- 直把设计, 镀硬铬手柄
- 全钢内芯, 整体焊接
- 整体硫化, 彩色盖片
- 10-20kg 2.5kg间隔, 25-45kg, 5kg间隔

Color Options:



EZ CURL URETHANE BARBELL / 豪华PU曲杆杠铃

ASW89879GTS1 Urethane EZ Curl Barbell Set 10-20kg (5 pcs)
ASW89879GTS2 Urethane EZ Curl Barbell Set 25-45kg (5 pcs)
ASW89879GTS3 Urethane EZ Curl Barbell Set 10-45kg (10 pcs)

SPECIFICATION.

- Solid steel heads.
- Premium urethane surface.
- Color urethane end caps.
- 10-20kg in 2.5kg, 25-45kg in 5kg increments.
- Ultra durable hard chrome plated grips in 32mm (10-20kg) and 34mm (25-45kg) diameter grips.

- 环保无味PU
- 直把设计, 镀硬铬手柄
- 全钢内芯, 整体焊接
- 整体硫化, 彩色盖片
- 10-20kg 2.5kg间隔, 25-45kg, 5kg间隔

Color Options:



SPEED VEST / 负重衣

ASW81180GT-SV05 5KG Speed Vest-Black
ASW81180GT-SV10 10KG Speed Vest-Black

SPECIFICATION.

- Padded vest comes with removable sand-filled weight bags.
- Easily add or remove bags to customize overall weight to suit specific training needs.
- Use for plyometric drills, bodyweight exercises.

- 防拉伸面料
- 配有负重小包, 易取易入
- 适用于身体负重耐力训练

Color Options:



INFINITY VEST / 弹力负重马甲

ASW81199GT-IV05 5KG Infinity Vest-Blue
ASW81199GT-IV10 10KG Infinity Vest-Blue

SPECIFICATION.

- One size fits most. With non-adjustable weights.
- Available in 5kg and 10kg models.
- Do not machine wash or soak in water.

- 弹力复合面料, 舒适度好
- 配有反光条, 有利夜间使用
- 不可以调节重量
- 不可机洗或浸泡水中

Color Options:



20KG RUBBER PUMP SET / 20KG 豪华彩色包胶杠铃成套件

ASW88189GT Rubber Pump Set

SPECIFICATION.

- 1.25kg rubber plates-pair-Yellow.
- 2.5kg rubber plates-pair-Green.
- 5kg rubber plates-pair-Orange.
- 30mm Hollow Bar.
- 30mm Clamp Collars with protective rubber inserts-Pair.

- 优质彩色包胶片, 摩登独家研究设计
- 配置为: 1.25kg*2pcs, 2.5kg*2pcs, 5kg*2pcs
- 高档电镀杆配撕不破海绵 30*1400mm :1pc
- 弹簧卡头:2pcs
- 适用于团体操课

Color Options:



ASW88789GT

ASW82189GT

ASW84187GT

ASW84187GT

ASW84187GT

ASW82189GT

ASW84187GT

ASW84187GT

ASW84187GT

Chromed Hex Bar / OB 六边框

- 01 CHROME SLEEVE
- 02 CHROME SHAFT
- 03 PU END CAP



WEIGHT:21kg
SHAFT DIAMETER:28mm
CAPACITY:400kg

34" Chromed Olympic Bar / OB 方框器

- 01 CHROME SLEEVE
- 02 CHROME SHAFT
- 03 PU END CAP



WEIGHT:12kg
SHAFT DIAMETER:28mm
BUSHING:2pcs copper ring
and 2pcs ball bearing
CAPACITY:300kg

122cm Chromed EZ Curl Olympic Bar / OB47 普通弯杆

- 01 CHROME SLEEVE
- 02 CHROME SHAFT
- 03 PU END CAP



WEIGHT:9kg
SHAFT DIAMETER:28mm
BUSHING:2pcs copper ring
and 2pcs ball bearing
CAPACITY:150kg

122cm Hard Chromed EZ Curl Olympic Bar / OB47 豪华弯杆

- 01 HARD CHROME SLEEVE
- 02 HARD CHROME SHAFT



WEIGHT:10kg
SHAFT DIAMETER:30mm
BUSHING:2pcs copper ring
and 2pcs needle bearing
CAPACITY:150kg

122cm Chromed Olympic Bar / OB47 普通直杆

- 01 CHROME SLEEVE
- 02 CHROME SHAFT
- 03 PU END CAP



WEIGHT:8.8kg
SHAFT DIAMETER:28mm
BUSHING:2pcs copper ring
and 2pcs ball bearing
CAPACITY:150kg

122cm Hard Chromed Olympic Bar / OB47 豪华直杆

- 01 HARD CHROME SLEEVE
- 02 HARD CHROME SHAFT



WEIGHT:10kg
SHAFT DIAMETER:30mm
BUSHING:2pcs copper ring
and 2pcs needle bearing
CAPACITY:150kg

220CM Chromed Olympic Bar / OB86 普通奥杆700LB

- 01 CHROME SLEEVE
- 02 CHROME SHAFT
- 03 PU END CAP



WEIGHT:20kg
SHAFT DIAMETER:30mm
BUSHING:2pcs copper ring
and 2pcs ball bearing
CAPACITY:700lbs-318kg

220CM Hard Chromed Olympic Bar / OB86 豪华奥杆700LB

- 01 HARD CHROME SLEEVE
- 02 HARD CHROME SHAFT



WEIGHT:20kg
SHAFT DIAMETER:30mm
BUSHING:2pcs copper ring
and 4pcs needle bearing
CAPACITY:700lbs-318kg

183CM Chromed Olympic Bar / OB72 普通奥杆

- 01 CHROME SLEEVE
- 02 CHROME SHAFT
- 03 PU END CAP



WEIGHT:15kg
SHAFT DIAMETER:28mm
BUSHING:2pcs copper ring
and 2pcs ball bearing
CAPACITY:150kg

220CM Hard Chromed Olympic Bar / OB86 豪华奥杆1000LB

- 01 HARD CHROME SLEEVE
- 02 HARD CHROME SHAFT



WEIGHT:20kg
SHAFT DIAMETER:30mm
BUSHING:2pcs copper ring
and 4pcs needle bearing
CAPACITY:1000lbs-454kg

220CM Hard Chromed Olympic Bar / CROSS FIT 专用奥杆 1500LB

- 01 HARD CHROME SLEEVE
- 02 BLACK OXIDE SHAFT
- 03 ALLOY STEEL SHAFT



WEIGHT:20kg
SHAFT DIAMETER:28mm
BUSHING:2pcs copper ring and 4pcs needle bearing
CAPACITY:1500lbs-680kg





TRAINING SAND BAG / 终极沙包

ASW78189GT-TSB05 5kg Traing Sand Bag-Orange
 ASW78189GT-TSB10 10kg Traing Sand Bag-Red
 ASW78189GT-TSB15 15kg Traing Sand Bag-Blue
 ASW78189GT-TSB20 20kg Traing Sand Bag-Green

SPECIFICATION.

·Size 540(L)*210(D)mm.
 ·Stronger PVC cover.
 ·Slam ball inside.

- 台湾环保型加厚人造革面料，容易清洗
- 内填高密度EPE发泡，耐压不变形
- 配重采用防爆型灌沙球，有效防止爆裂
- 提高舒适度，两端织带精致密缝，耐磨，耐拉
- 五个把手，手臂，肩膀各个部位都可以锻炼到

Color Options:

POWER BARREL / 体能甩筒

ASW78187GT-PB4 4kg Power Barrel-Purple
 ASW78187GT-PB6 6kg Power Barrel-Red
 ASW78187GT-PB8 8kg Power Barrel-Blue
 ASW78187GT-PB10 10kg Power Barrel-Grey

SPECIFICATION.

·Size 1070(L)*145(D)mm.
 ·Made out of TPR.
 ·Environmentally-friendly.

- 专利产品
- 不同的重量等级适合各层次锻炼者的需要。可丢、可掷、可拉、可举的全功能器材能用于全身锻炼，使用者在柔软度、平衡感、力量、肌肉线条与减脂训练上效果显著。
- 规格：4KG-紫色\6KG-红色\8KG-蓝色\10KG-深灰。

Color Options:



WEIGHT BAG / 高级牛角包

ASW77189GT-BB5 5kg Weight Bag-Blue
 ASW77189GT-BB8 8kg Weight Bag-Yellow
 ASW77189GT-BB10 10kg Weight Bag-Red
 ASW77189GT-BB12 12kg Weight Bag-Green
 ASW77189GT-BB15 15kg Weight Bag-Black

SPECIFICATION.

·Size 700(L)mm.
 ·PU cover.
 ·Weight Bags are perfect for use in functional class training.

- 彩色PU外壳，不同重量不同颜色
- 带有安全织带把手
- 适用于团体操

Color Options:



06
AUXILIARY & ACCESSORIES
 辅助&配件



EXERCISE WHEEL /
 ROTATIONAL PUSH UP STAND / SPORTS GLOVES /
 LEATHER WEIGHT LIFTING BELT / AB MAT

健腹轮/俯卧撑架/
 运动手套/举重腰带/
 AB垫

EXERCISE WHEEL / 静音健腹轮

ASW75438GT Exercise Wheel-Green

SPECIFICATION.

·Size 300(L)*145(Ø)mm.
 ·Made out of PP and EVA.
 ·Textured, molded plastic wheel.
 ·Strength in the shoulders, chest, and core.
 ·Packing- color box for each one.

- 轮毂PP制作，圆润，有韧性
- 包盖加长把手，浮点防滑设计
- 轮毂PP外包发泡EVA，超静音
- 加厚不锈钢管
- 双轮设计，受力均匀
- 主要针对肩部、胸部、核心肌肉群训练

Color Options:



TRAINING SAND BAG / 终极沙包

MD1650-TSB05 5kg Traing Sand Bag-Orange
 MD1650-TSB10 10kg Traing Sand Bag-Red
 MD1650-TSB15 15kg Traing Sand Bag-Blue
 MD1650-TSB20 20kg Traing Sand Bag-Green

SPECIFICATION.

Size 540(L)*210(D)mm.
 Stronger PVC cover.
 Slam ball inside.

- 台湾环保型加厚人造革面料，容易清洗
- 内填高密度EPE发泡，耐压不变形
- 配重采用防爆型灌沙球，有效防止爆裂
- 提高舒适度，两端织带精致密缝，耐磨，耐拉
- 五个把手，手臂，肩膀各个部位都可以锻炼到

Color Options:

POWER BARREL / 体能甩筒

MD1659-PB4 4kg Power Barrel-Purple
 MD1659-PB6 6kg Power Barrel-Red
 MD1659-PB8 8kg Power Barrel-Blue
 MD1659-PB10 10kg Power Barrel-Grey

SPECIFICATION.

Size 1070(L)*145(D)mm.
 Made out of TPR.
 Environmentally-friendly.

- 专利产品
- 不同的重量等级适合各层次锻炼者的需要。可丢、可掷、可拉、可举的全功能器材能用于全身锻炼，使用者在柔软度、平衡感、力量、肌肉线条与减脂训练上效果显著。
- 规格：4KG-紫色\6KG-红色\8KG-蓝色\10KG-深灰。

Color Options:



WEIGHT BAG / 高级牛角包

MD1657-BB5 5kg Weight Bag-Blue
 MD1657-BB8 8kg Weight Bag-Yellow
 MD1657-BB10 10kg Weight Bag-Red
 MD1657-BB12 12kg Weight Bag-Green
 MD1657-BB15 15kg Weight Bag-Black

SPECIFICATION.

Size 700(L)mm.
 PU cover.
 Weight Bags are perfect for use in functional class training.

- 彩色PU外壳，不同重量不同颜色
- 带有安全织带把手
- 适用于团体操

Color Options:



06
AUXILIARY & ACCESSORIES
 辅助&配件



EXERCISE WHEEL /
 ROTATIONAL PUSH UP STAND / SPORTS GLOVES /
 LEATHER WEIGHT LIFTING BELT / AB MAT

健腹轮/俯卧撑架/
 运动手套/举重腰带/
 AB垫

EXERCISE WHEEL / 静音健腹轮

MD1412 Exercise Wheel-Green

SPECIFICATION.

Size 300(L)*145(Ø)mm.
 Made out of PP and EVA.
 Textured, molded plastic wheel.
 Strength in the shoulders, chest, and core.
 Packing- color box for each one.

- 轮毂PP制作，圆润，有韧性
- 包垫加长把手，浮点防滑设计
- 轮毂PP外包发泡EVA，超静音
- 加厚不锈钢管
- 双轮设计，受力均匀
- 主要针对肩部、胸部、核心肌肉群训练

Color Options:



PRO WRIST ROLLE / 前臂训练器

ASW71063GT Pro Wrist Roller-Black

SPECIFICATION.

- Size of rope 1050(L)mm.
- Uses only standard plates (sold separately).
- Strengthen grip and forearm strength by rolling the weight up and down.
- Add resistance by increasing the weight.
- Packing-color box for each set.

- 钢管外套舒适泡棉
- 配合普通铃片使用 (铃片单独销售)
- 配上不同重量的铃片, 旋转手柄使铃片上下走动
- 锻炼手臂握力和前臂力量

Color Options:

POWER WHEEL / 大号健腹轮

ASW79028GTPower Wheel-Black

SPECIFICATION.

- Size 350(p)*570(L)mm.
- Improves power & balance for a strong core decreasing the likelihood of injuries.
- Tones entire body even works chest, arms, hamstrings and calves.
- Packing-carton for each set.

- 宽大的轮子设计, 35CM直径
- 宽大踏板带有魔术贴和乳胶套
- 全身运动, 改善动平衡
- 锻炼胸部、手臂、小腿、核心肌肉群

Color Options:

LEATHER POWER BELT / 举重牛皮腰带

ASW76129GT Leather Power Belt-Yellow
ASW76128GT Leather Power Belt-Black

SPECIFICATION.

- Size 1150(L)*11(W)mm.
- Double-pronged steel buckle.
- Packing-polybag/pc.

- 精选头层牛皮制作
- 腰带背部衬有加厚海绵
- 精密增强尼龙线双道缝合
- 双金属叉设计的五金扣件
- 在训练时保护腰部不受到伤害

Color Options:



ROTATIONAL PUSH UP STAND / 旋转俯卧撑架

ASW70639GT Rotational Push up Stand-Green

SPECIFICATION.

- Size 20(D)* 9(H)mm.
- Act on the arms, chest, shoulders, and back.
- Helps reduce strain on wrists and elbows.
- Helps to stabilize and strengthen the shoulder joint.
- Packing-color box for one pair.

- 旋转手柄设计, 防滑底面
- 作用于手腕、手臂、胸肌、肩部、背部肌肉
- 改善肩关节

Color Options:



SPORTS GLOVES / 运动手套

ASW88179GT-S Sports Gloves-Green
ASW88179GT-M Sports Gloves-Green

SPECIFICATION.

- Size S# M#.
- Packing-PVC bag for one pair.

- 耐磨复合超纤皮缝合而成
- 透气网眼, 佩戴舒适
- 弹性设计适合大多人手掌
- 有效保护手掌, 抓举防脱落

Color Options:



EXERCISE WHEEL / 五孔健腹轮

ASW73249GT Exercise Wheel-Green

SPECIFICATION.

- Size 300(L)*178(Ø)mm.
- Made out of PP and PVC.
- Textured, molded plastic wheel.
- Strength in the shoulders, chest, and core.
- Packing- color box for each one.

- 轮毂环保PP材质, 圆润, 有韧性
- 把手TPU材质, 有弹性
- 轮圈为TPR材质, 防滑, 低噪音
- 加厚不锈钢管
- 双轮设计, 受力均匀
- 主要针对腰部、臀部、背部的肌肉群训练

Color Options:

EXERCISE WHEEL / 静音豪华健腹轮

ASW73389GT Exercise Wheel-Black

SPECIFICATION.

- Size 180(p)*300(L)mm.
- Made out of PP and TPR.
- Textured, molded plastic wheel.
- Strength in the shoulders, chest, and core.
- Packing- one box for each one.

- 轮毂环保PP材质, 圆润, 有韧性
- 撕不破泡棉把手
- 轮圈为TPE材质, 超静音
- 加厚不锈钢管
- 单轮设计
- 主要针对腰部、臀部、背部的肌肉群训练

Color Options:



PLASTIC COLLAR / 尼龙卡头

ASW79905GT Plastic Collar-Black

SPECIFICATION.

- Size 50mm, 30mm,diameter.
- Made out of nylon.
- for olympic bar and regular bar.
- Packing-polybag for one pair.

- 优质尼龙制造, 耐摔测试
- 外观平滑、美观
- 开启方便
- 50MM-奥林专用卡头, 30mm-莱美卡头

Color Options:



PLASTIC COLLAR / 尼龙卡头

ASW79640GT Plastic Collar-Black

SPECIFICATION.

- Size 25mm,diameter.
- Made out of nylon.
- Easy for using.
- Packing-polybag for one pair.

- 优质尼龙制造
- 外观平滑、美观
- 耐摔测试
- 莱美铃杆专用卡头, 开启方便

Color Options:



ALUMINIUM OP COLLAR / 铝卡头

ASW75101GT Aluminium OP Collar-Rose Red
ASW75101GT Aluminium OP Collar-Golden

- 适用于奥林匹克杆
- 铝制



SPRING COLLAR/弹簧卡头

ASW73092GT Spring Collar-Silver

- 选用不锈钢材料制作
- 3圈缠绕
- 操作简单，经济实用
- 奥杆专用弹簧卡头

SPECIFICATION.

- Size 50mm, diameter.
- Made out of steel.
- Easy for using.
- Packing-polybag for one pair.

Color Options:



PRO TRICEP ROPE/三头肌绳

ASW78733GT Pro Tricep Rope-Black

- 增强尼龙绳
- 优质工程塑料球头
- 摔打承重测试
- 加厚加粗电镀挂钩

SPECIFICATION.

- Size 680(L)mm.
- Work both triceps at the same time with the Pro Tricep Rope.
- Rope allows for more dynamic movement than solid piece.

Color Options:

ATTACHMENT BARS/机械零件

- 01 ASW70319GT Single Grip Handle w/Rotating Handle
- 02 ASW77619GT Low Pulley Bar
- 03 ASW76326GT Revolving 20" Straight Bar
- 04 ASW75798GT Revolving Curl Bar
- 05 ASW71403GT Revolving 48" Lat Bar
- 06 ASW76298GT Revolving 24" Lat Bar
- 07 ASW73922GT Revolving Press Down Bar
- 08 ASW74315GT Tricep Press Down Bar
- 09 ASW79716GT Revolving Multi Exercise Bar
- 10 ASW78514GT Multi Purpose V-Bar



BAR WRAP PAD/杠铃肩垫

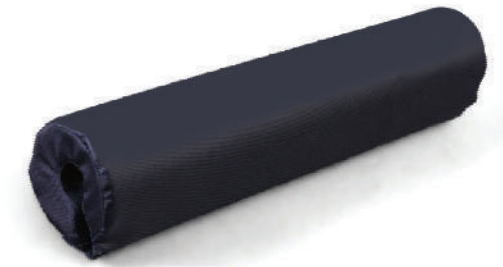
ASW81063GT Bar Wrap Pad-Black

SPECIFICATION.

- Size 400(L)mm.
- Nylon-covered foam pad with Velcro closure protects neck and back from bar.

- 高强度尼龙布
- 衬有加厚海绵
- 侧面强力魔术扣式结构
- 配合力量器材使用，可有效保护颈部

Color Options:



LIFTING STRAPS/举重护掌

ASW71089GT Lifting Straps-White

SPECIFICATION.

- Size 380(L)mm.
- Strong straps that wrap around bar and wrists aid in grip strength during heavy lifting.

- 高强度纯棉织带
- 布料经过抓绒处理
- 配合力量器材使用，可有效保护手掌

Color Options:



AB STRAPS/AB带

ASW81068GT AB Straps-Black

SPECIFICATION.

- Size 320(L)*175(W)mm.
- xford + EVA with big hook.
- Packing-polybag for one pair.

- 高档牛津布精密缝合而成
- 内里衬有海绵护垫
- 增强尼龙织带交叉缝纫
- 镀锌加粗金属大卡扣
- 可有效锻炼和增强腹肌

Color Options:



LIFTING CHAINS/负重铁链

ASW710667GT 10 10kg Lifting Chains-Silver
ASW710667GT 15 15kg Lifting Chains-Silver
ASW710667GT 20 20kg Lifting Chains-Silver

SPECIFICATION.

- Size 1500mm.
- Lifting chains provide a great workout.
- Each link offers additional resistance.

- 优质加粗镀锌铁链
- 铸铁固定锁扣
- 渐进式负重训练

Color Options:

HANDLE FOR LANDMINE/炮台双把

ASW80063GTHandle for Landmine-Black

SPECIFICATION.

- Handle attachment to the Landmine for a workout that targets the shoulders, core, and hips.

- 防滑把手
- 适用于奥林匹克杆
- 配合炮台架使用

Color Options:





TRAIN HARD DIPPING /负重腰带

ASW72343GT Train Hard Dipping-Black

SPECIFICATION.

·Size iron chain Length 250mm.
·Belt helps add weight to one's own body during dips and pull-ups to increase resistance and level of diffi culty.

- 加粗镀锌实心铁链
- 优质增强尼龙织带
- 十字交叉精密缝切
- 衬有加厚柔软海绵
- 配合配重物，锻炼腰部力量

Color Options: ■



HANDLE FOR LANDMINE /炮台双把

ASW80861GT Handle for Landmine-Black

SPECIFICATION.

Add the wide handle attachment to the Landmine for a workout that targets the shoulders, core, and hips.

- 防滑把手
- 适用于奥林匹克杆
- 配合炮台架使用

Color Options: ■



TRAINING TIMER /计时器

ASW85066GT Training Timer-Black

SPECIFICATION.

-with remote controller and munal.

- 多功能设计
- 配有遥控器和说明书
- 适用于CROSS FIT

Color Options: ■

AB MAT/AB垫

ASW75808GT AB Mat-Black

SPECIFICATION.

·Size 360*300*80mm.
·Comfortable design contoured to lower back to provide support and to help prevent injury during abdominal workout.

- 优质皮革面料
- 内嵌高弹力EPE
- 弧形表面设计
- 保护背部，有效锻炼腹部肌肉群

Color Options: ■



TRX MOUNT /TRX固定扣

ASW89604GT TRX Mount-Silver

SPECIFICATION.

·Size 18cm.
·With two screws and two setscrews.

- 采用高密度优质钢材
- 底盘加厚处理
- 加厚固定钢圈满焊链接
- 附有膨胀螺丝和自攻螺丝

Color Options: ■



MEDICINE BALL HARNESS /球囊

ASW74099GT Medicine Ball Harness

SPECIFICATION.

·Quickly change out the medicine ball to accommodate all clients.
·Blast the core, legs, shoulders, and arms in rotational and torsional movements.
·Perfect for slamming, chopping, and swinging.
·Fits most medicine balls from 1 to 10kg.

- 适用于1-10kg重力球
- 可以快速的更换重力球
- 可自由编辑各种训练动作
- 加粗的、软软的绳子

07
ASSORTED EQUIPMENT
配套器材

OP PLATE TREE /铃片架

ASW85053GT OP Plate Tree-Black

SPECIFICATION.

·For olympic plates.
·8pcs Chromed Bar can be used.
·Assembly required.
·Assembly size 71*6*103cm.
·Packing-carton for each set.

- 适用于大孔铃片
- 8个电镀杆，有效避免铃片划伤
- 可负载300kg铃片

Color Options: ■



DUMBBELL RACK / KETTLEBELL RACK /
MEDICINE BALL REACTOR /
TRUNK BLASTER BASE / SIT-UP BENCH

哑铃架/壶铃架/
重力球弹床/炮台架/
可调式哑铃凳



MEDICINE BALL REACTOR /重力弹床

ASW88662GT Medicine Ball Reactor-Grey

SPECIFICATION.

·The trampoline size 100cm,26kg.
·Quickly adjust sides of platform.
·for Medicine ball(sold separately).
·Packing-carton for each set.

- 可调节弹床的角度
- 牛津布围边，防滑脚套设计
- 使用者选择适当重量的重力球配合使用
- 可用于训练手部力量、爆发力、反应能力

Color Options: ■





OP PLATE TREE / 铃片架

ASW78662GT OP Plate Tree-Black

SPECIFICATION.

- For olympic plates.
- 5pcs Chromed Bar can be used.
- It can hold 3pcs olympic bar.
- Assembly required.
- Packing-carton for each set.

- 时尚造型
- 适用于大孔铃片和奥林匹克杆
- 6个电镀杆和3个杆子插孔
- 可负载200kg铃片,可放置三根奥杆

Color Options:

DUMBBELL RACK / 十对哑铃架

ASW83961GT Dumbbell Rack-Black

SPECIFICATION.

- Horizontal rack for 10prs dumbbell.
- Assembly size 240*73*80cm.
- Folded board with ABS supporter.
- 1000KG weight capacity.
- Packing-carton for each set.

- M型折弯钢板,可负载1000kg
- 适用于2-50kg健身房专用哑铃
- ABS哑铃托
- 放置哑铃的手柄内长需在14CM以上

Color Options:



X DUMBBELL RACK / X型豪华哑铃架

ASW78667GT X Dumbbell Rack-Black

SPECIFICATION.

- for 1-10kg chromed dumbbell.
- Assembly required.
- Assembly size 63*59.5*120.5cm.
- Packing-carton for each set.

- 时尚的X造型
- 适用于1-10kg电镀哑铃
- 每个开口处带有塑料垫,保护产品,减少噪音
- 安装时注意钢板的顺序

Color Options:



DUMBBELL RACK / 十对哑铃架

ASW78322GT Dumbbell Rack-Black

SPECIFICATION.

- Horizontal rack for 10prs dumbbell.
- Assembly required.
- Assembly size 246*70.5*87cm.
- Folded board with ABS supporter.
- Packing-carton for each set.

- 经典造型
- 适用于2-50kg健身房专用哑铃
- ABS哑铃托
- 放置哑铃的手柄内长需在14CM以上

Color Options:



1-10KG VERTICAL STUDIO DUMBBELL RACK / 垂直10对哑铃架

ASW77682GT-10kg Vertical Studio Dumbbell Rack-Black

SPECIFICATION.

- for 1-10kgs chromed or rubber dumbbell.
- Assembly required.
- Assembly size 73*60*139.6cm.
- Packing-carton for each set.

- 垂直的欧美造型,美观大气
- 适用于1-10kg电镀或包胶哑铃
- 每个开口处带有塑料垫,保护产品,减少噪音

Color Options:



SUSPENSION FRAME / TRX架子

ASW86948GT Suspension Frame-Black

SPECIFICATION.

- Can be fitted TRX gym ring,punch bag.
- Assembly required.
- Assembly size 407*256*250cm.
- Train small to mid-size groups in small space.
- Includes monkey bars and attachment points for training tools.
- Packing-carton for each set.

- 时尚造型,稳重大气
- 可悬挂沙袋、TRX、吊环等私教工具
- 底部预留固定空位,可使用膨胀螺丝固定脚部
- 占地面积 407*256*250cm

Color Options:



KETTLEBELL RACK / 双层壶铃架

ASW71234GT Kettlebell Rack-Black

SPECIFICATION.

- Horizontal rack for kettle bell.
- Assembly required.
- Assembly size 139*63*74cm.
- with black leatheroid on the board.
- Packing-carton for each set.

- 经典的两层造型
- 适用于放置各种壶铃
- 钢板上贴合人造革,减少噪音和保护产品
- 两侧配置防掉落把手

Color Options:



PUMP SET RACK / 豪华健美杠铃架

ASW85088GT Pump Set Rack-Black

SPECIFICATION.

- Can be fitted 20sets pump set.
- Assembly required.
- Assembly size 186*68.5*161cm.
- Packing-carton for each set.

- 摩登独家设计造型,稳重大气
- 可放置20套健美杠铃成套件
- 大规格的铃片放置下方,小规格的放置上方

Color Options:



PUMP SET RACK / 莱美杠铃架

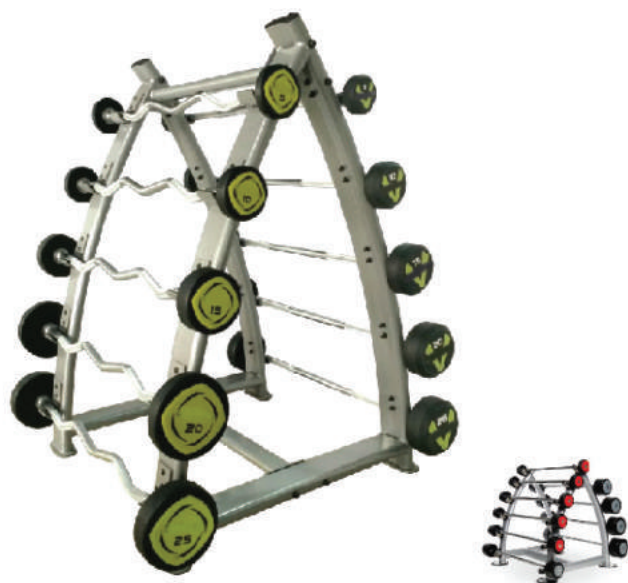
ASW87209GT Pump Set Rack-Black

SPECIFICATION.

- Can be fitted 10sets pump set.
- Assembly required.
- Assembly size 64*72*1451cm.
- Packing-carton for each set.

- 经典造型，稳重大气
- 可放置10套莱美杠铃成套件
- 大规格的铃片放置下方，小规格放置上方

Color Options:



BARBELL RACK / 杠铃架

ASW75089GT Barbell Rack-Black

SPECIFICATION.

- Can be fitted 10pcs barbell.
- Assembly required.
- Assembly size 94*93*135cm.
- Packing-carton for each set.

- 大号平嘴管造型，大气稳重
- 可放置10支手杠铃（内长90cm以上）
- 大规格的杠铃放置下方，小规格放置上方

Color Options:



WEIGHT BAG STORAGE / 沙包堆放架

ASW89064GT Weight Bag Storage-Black

SPECIFICATION.

- Can be fitted 5pcs weight bag.
- Assembly required.
- Assembly size 57*69*141cm.
- Packing-carton for each set.

- 平嘴管造型，大气稳重
- 商用级别
- 可放置能量包，牛角包，重力球等

Color Options:



BAR HOLDER / 奥杆插座

ASW81989GT Bar Holder-Black

SPECIFICATION.

- Can be fitted 8pcs olympic bar.
- Assembly required.
- Assembly size Φ 40.6*19.3(H)cm.
- Packing-carton for each set.

- 简约风格设计
- 八位插孔内置高强度塑料套，有效减少杆子的摩擦
- 加厚10mm钢板

Color Options:



MEDICINE BALL RACK / 重力球架

ASW80965GT Medicine Ball-Black

SPECIFICATION.

- Can be fitted 10pcs ball.
- Packing-carton for each set.
- Assembly required.

- 圆管造型，底座套防滑橡胶套
- 可放置10个球（重力球、墙球、SLAM BALL）
- 大规格球放置下方

Color Options:

MEDICINE BALL RACK / 重力球架

ASW81514GT Medicine Ball-Black

SPECIFICATION.

- Can be fitted 5pcs ball.
- Assembly required.
- Assembly size 32.5*44.5*157cm.
- Packing-carton for each set.

- 简约风格设计，采用平嘴管制作
- 圆弧型底座，稳重大方
- 可放置5个重力球

Color Options:



LANDMINE / 炮台架

ASW86187GT Landmine-Black

SPECIFICATION.

- Used 10mm steel board and rubber mat for base.
- Assembly required.
- Assembly size 74.5*40.5*21.5cm.
- Packing-carton for each set.

- 欧美风格设计
- 地板采用厚度10MM的钢板和橡胶板复合
- 可配套奥杆或普通杆子使用

Color Options:



SUPPORTING BARS / 移动双杠

ASW87728GT Supporting Bars-Yellow

SPECIFICATION.

- Supports up to 400 lbs.
- Assembly required.
- Assembly size 76*63*40cm.
- Packing-carton for each pair.

- 圆管造型，套斯不破泡棉把手
- 多角度调整脚套，确保产品平衡
- 可承重200kg
- 适用于核心力量训练

Color Options:



BOSU RACK / 波速球架 / 健身球架

ASW85221GT Bosu Ball Rack-Black

- 多功能，欧美造型
- 适用于直径55、65、75CM健身球，波速半球
- 商用级别

SPECIFICATION.

- Can be stored 9pcs gym ball or bosu ball.
- Assembly required.
- Assembly size 239*77*198.5cm.
- Packing-carton for each set.

Color Options:

SQUAT STAND / 深蹲架

ASW87029GT Squat Stand-Black

- 商用型
- 多孔设计，配合杠铃练习
- 横杆上加厚尼龙板加固
- 杆子和铃片单独销售

SPECIFICATION.

- Can be stored 9pcs gym ball or bosu ball.
- Assembly required.
- Assembly size 239*77*198.5cm.
- Packing-carton for each pair.

Color Options:

JERK BLOCKS / 深蹲塔台

ASW80088GT Jerk Blocks-Wood

- 欧美商用型，耐用
- 加厚型多层板，框结构
- 可调节4个高度
- 每对装一个托盘包装
- 杆子和铃片单独销售

SPECIFICATION.

- 4PCS/SET 2SET/PR
- L91CM*W51CM*H94CM/SET
- 1 of 4: 90x51x6cm
- 2 of 4: 90x51x15.5cm
- 3 of 4: 90x51x30.5cm
- 4 of 4: 90x51x38cm
- Packing way:Pallet/PR

Color Options:



COMMERCIAL SIT-UP BENCH / 商用可调节哑铃凳

MD7013 Commercial Sit-up Bench-Black
ASW87728GT

- 高档商用型
- 高密度海绵皮革打造，加长加宽，厚实耐用
- 多角度调节躺着板高度，脚底有防滑脚套，保护地板
- 配置豪华电镀把手，底部配置两个尼龙轮子，便于移动
- 整体可承受500KG

SPECIFICATION.

- Can be stored 9pcs gym ball or bosu ball.
- Assembly required.
- Assembly size 239*77*198.5cm.
- Packing-carton for each set.

Color Options:

